



**KEY BENEFITS**

- Rapid recovery of lost data from disk can occur within minutes, minimizing the downtime experienced by users and eliminating the lengthy process of restoring data from tape.
- Avoids physically moving or copying all source data with every backup by creating PiT snapshots in seconds regardless of the size of the source volume.
- Tracks only the changes that are made to the source volume, allowing for efficient storage of frequent PiT snapshots.
- Reduces dependency on IT resources coming on-site to conduct manual backups and recover data.
- Microsoft VSS provider support allows for easy coordination of multiple vendor data protection solutions in order to create 'clean' volume snapshots.
- Convenient, integrated user interface within MegaRAID Storage Manager® (MSM) for creating PiT backups

## LSI™ MegaRAID® Recovery Software

LSI MegaRAID Recovery software enhances the LSI data protection feature set by offering Snapshot functionality that allows users to capture source volume data changes and either 'Restore-from-View' or 'Rollback' to a previous Point in Time (PiT) should accidental or malicious data deletion or infection occur. While traditional overnight backups continue to be the preferred method for creating physical copies of data for offsite or archival purposes, MegaRAID Recovery meets a growing need for more frequent backups and reduced recovery times. By supplementing traditional backup methods with MegaRAID Recovery, IT organizations can greatly enhance their level of business continuity, data protection and restore capabilities.

### Restore-from-View or Rollback in Minutes

As opposed to the lengthy process of restoring data from tape – which often takes many hours to complete – restoring data from a PiT takes much less time, typically just a few minutes. When a file, record or file system must be recovered, any PiT can be mounted to create an "instant view" of the data at a previous point in time, and the selected data is quickly restored.

- Restore from View – allows user to conveniently mount a view of the snapshot in MSM and drag-and-drop lost data and/or files back into the source data volume.
- Rollback – allows users to quickly return the application to a previous point in time, prior to infection or malicious data corruption, without requiring re-installation of the application.

### No Data Movement

One of the key advantages of MegaRAID Recovery is its ability to create PiTs without physically duplicating data. By simply opening up a new volume that keeps track of any changes to data in the source volume, MegaRAID Recovery avoids the physical movement or copying of data, enabling each PiT to be created in seconds, regardless of the size of the source volume.

### Space-Efficient Snapshots

Each MegaRAID Recovery PiT volume snapshot is a fraction of the original volume size, because it only keeps track of the changes that are made to a volume after the PiT is created. Disk space for PiTs is pre-allocated (reserved as the 'Snap Repository', and the PiT is expanded in small increments as new data is written to the volume. Multiple PiTs of each volume can be retained online, enabling frequent snapshots to be stored in a space-efficient manner.

### Reduce IT Costs and Improve Data Protection

Communication and file-sharing applications encounter many changes in the data throughout the day. Most small and medium sized businesses (SMBs) have limited IT resources and can only run data backups once every 24 hours or less, most of which occur overnight. Longer backup cycles increase the risk that important changes made during the day are lost before the next backup

Supported RAID Controllers	MegaRAID SAS 9260-4i MegaRAID SAS 9260-8i MegaRAID SAS 9261-8i* MegaRAID SAS 9260-16i MegaRAID SAS 9280-4i4e MegaRAID SAS 9280-8e* MegaRAID SAS 9280-16i4e MegaRAID SAS 9280-24i4e
Supported Operating Systems	Windows 2003 Windows 2008
Software License Ordering PN	LSI00267
Physical Key Ordering PN	LSI00246
PITs-per-volume / Controller	8 / 504
Rollback	✓
Read / Write Volume Support	✓
Microsoft VSS Provider Support	✓
Snapshot of Boot Volume	✓

\* These controllers will accept only a software license and are not compatible with the physical hardware key

occurs. MegaRAID Recovery allows for quick and frequent snapshots of data to be taken with a only few mouse-clicks or by setting up automatic and scheduled backups, limiting reliance on dedicated IT resources.

### Boot Volume Protection

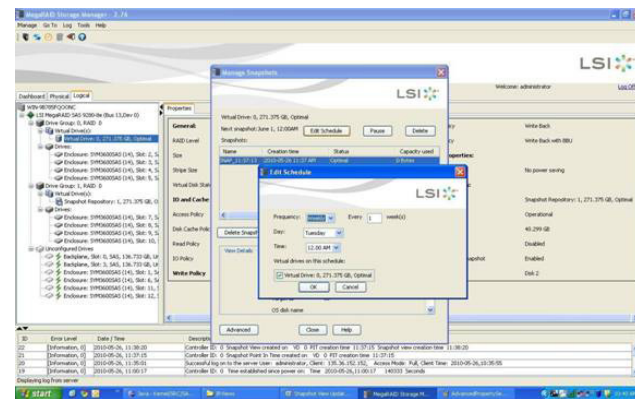
MegaRAID Recovery also offers a convenient way to implement additional boot volume protection. By isolating a server's boot volume to a separate Virtual Drive and enabling the Auto Snapshot feature, users can be guaranteed that bootable snapshots exist, should OS corruption occur. If, for any reason, the boot volume gets corrupted, the user can reboot, and within WebBIOS, choose the last known good Snapshot (PiT) and Rollback the boot volume. If there is a malicious file present that has created the corruption on the boot volume, administrators can roll back to a PiT before the malicious file was present. The additional boot volume protection from MegaRAID Recovery provides a more convenient way to re-enter an operating system and debug corruption issues.

### Microsoft Volume Shadow Copy Service (VSS) Provider Support

The Volume Shadow Copy Service (VSS) provides the backup infrastructure for the Microsoft Windows XP and Microsoft Windows Server 2003 operating systems. VSS has native support, using a standard set of application programming interfaces (APIs), for creating consistent point-in-time copies of data, regardless of the snapshot technology or application. As a certified Microsoft VSS Provider, MegaRAID Recovery can be initiated by VSS in order to create PiT volume snapshots on demand. This functionality provides a straight-forward and standard way to produce clean snapshots of a volume while coordinating with different types of business applications, file-system services, backup applications, and storage hardware.

### Convenient, Integrated User Interface for Creating PiTs

MegaRAID Recovery is conveniently enabled and configured through MegaRAID Storage Manager. By following a series of intuitive MSM wizards, the user can enable Recovery, configure the Snapshot repository, take snapshots with a single mouse click, and even schedule for automatic snapshots on a daily or weekly cadence. Each snapshot PiT is recorded on the "Snapshots" screen, showing the date and time as well as the storage space used. Additionally MSM is used to mount a view of the snapshot repository when restoring from view.



For more information and sales office locations, please visit the LSI web sites at:  
[lsi.com](http://lsi.com)    [lsi.com/channel](http://lsi.com/channel)    [lsi.com/contacts](http://lsi.com/contacts)

LSI, LSI and Design logo, MegaRAID, MegaRAID Management Suite, and MegaRAID Storage Manager are trademarks or registered trademarks of LSI Corporation. All other brand and product names may be trademarks of their respective companies.

LSI Corporation reserves the right to make changes to any products and services herein at any time without notice. LSI does not assume any responsibility or liability arising out of the application or use of any product or service described herein, except as expressly agreed to in writing by LSI; nor does the purchase, lease, or use of a product or service from LSI convey a license under any patent rights, copyrights, trademark rights, or any other of the intellectual property rights of LSI or of third parties.

Copyright ©2010 by LSI Corporation. All rights reserved.  
 April 2010

